

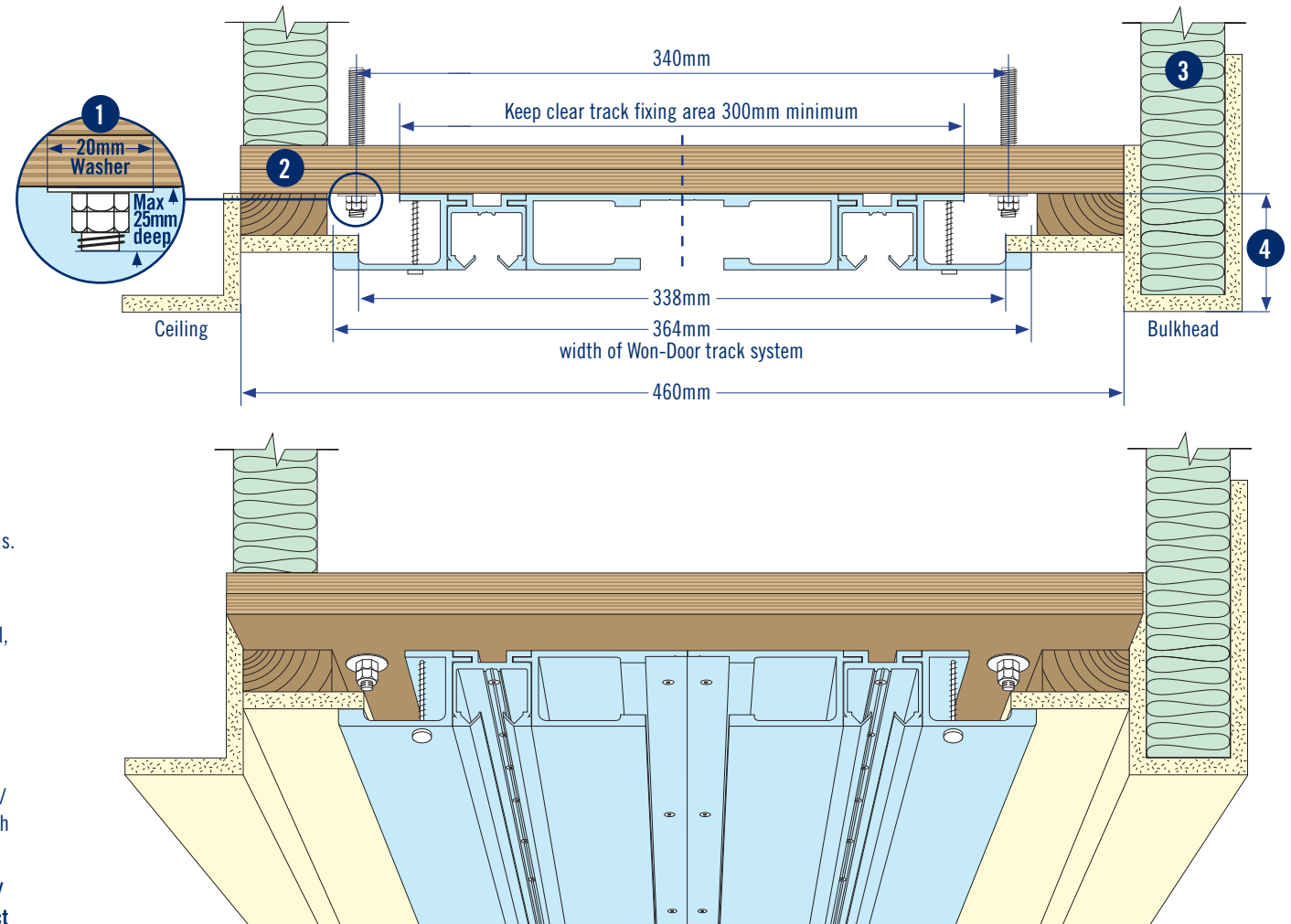


WON-DOOR
FOLDING PARTITIONS
FIRE & ACOUSTIC SOLUTIONS

DuraSound with Stabilizer Bar

HEAD DETAILS - RECESSED BULKHEAD

Straight door - Manual Operation
(Over 3.4m high, Max 6m high)



1. 10mm threaded rod with nuts and washers by main contractor.
Spacing: 600mm centres through opening, 300mm in stack depth areas.
(Refer P.3 for Stack Depth Area Calculation)
NOTE: All fixings must be kept clear of "Track Fixing Area"
2. Two (2) Layers 17mm x 460mm continuous plywood, screwed and glued, to be parallel with floor. Maximum level tolerance of ± 5 mm. By main contractor.
3. **Sound proofing:** Insulate above header as required for sound proofing "by others".
4. Plywood Header recessed anywhere from 41mm – 75mm above ceiling / bulkhead. 41mm recess would set the Won-Door track system flush with the ceiling / bulkhead.

NOTE: If you want the Won-Door track system set flush with the ceiling / bulkhead then please specify the "Recessed Track" head detail. Contact manufacturer for these details.

For further details contact:

Won-Door Australia Pty Ltd.

Tel: 1800 682 965

Email: info@won-door.com.au

Won-Door New Zealand Ltd.

Tel: 0800 688 555

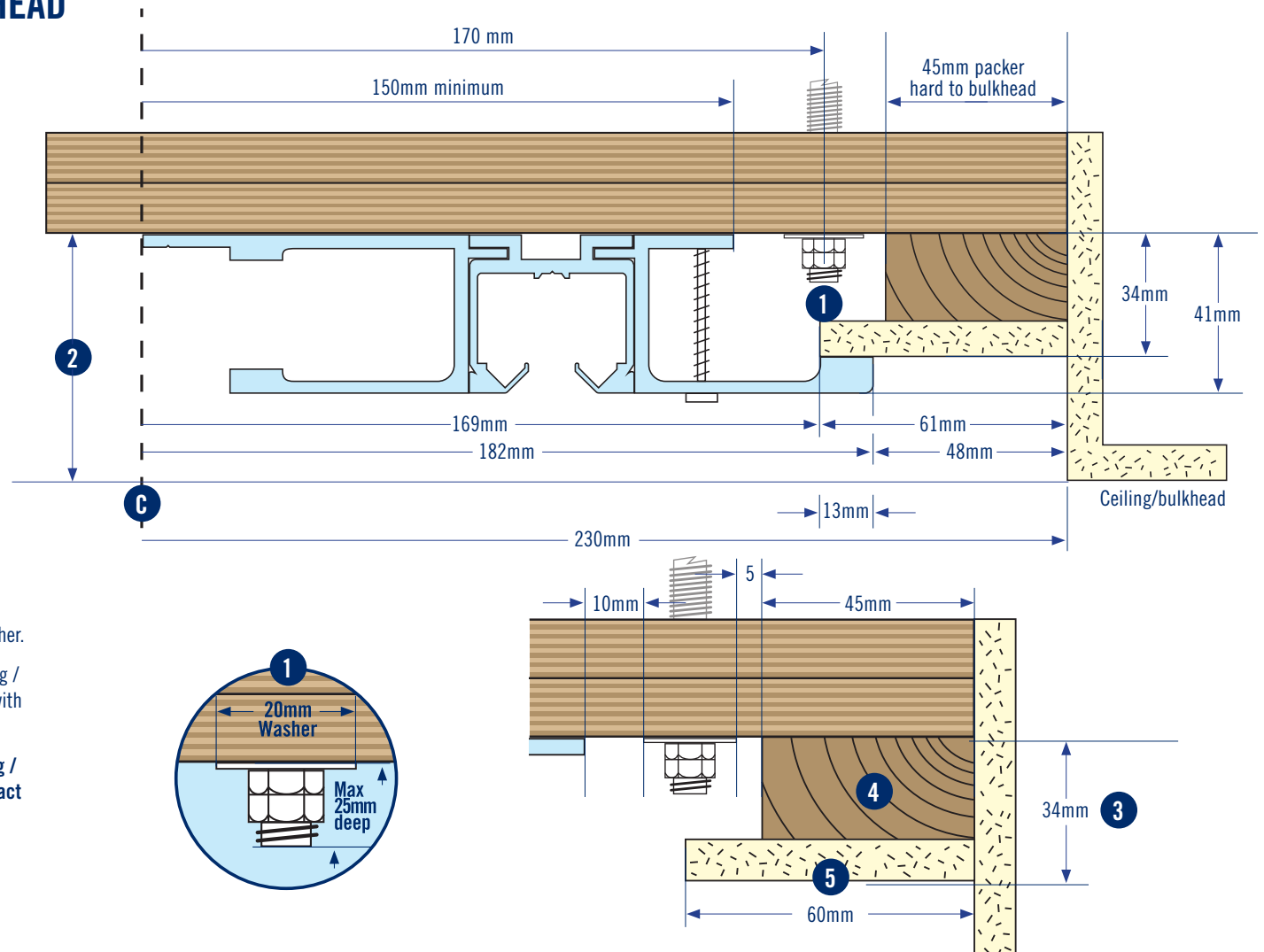
Email: info@won-door.co.nz



DuraSound with Stabilizer Bar

HEAD DETAILS - RECESSED BULKHEAD

Straight door - Manual Operation
(Over 3.4m high, Max 6m high)



NOTES:

1. Threaded rods 340mm apart (170mm from centre). 20mm circle washer.
2. Plywood Header recessed anywhere from 41mm – 75mm above ceiling / bulkhead. 41mm recess would set the Won-Door track system flush with the ceiling / bulkhead.

NOTE: If you want the Won-Door track system set flush with the ceiling / bulkhead then please specify the "Recessed Track" head detail. Contact manufacturer for these details.

3. Timber packer and plaster board depth combined to be 34mm.
4. Timber packer width 45mm.
5. Plaster board width 60mm.

For further details contact:

Won-Door Australia Pty Ltd.

Tel: 1800 682 965

Email: info@won-door.com.au

Won-Door New Zealand Ltd.

Tel: 0800 688 555

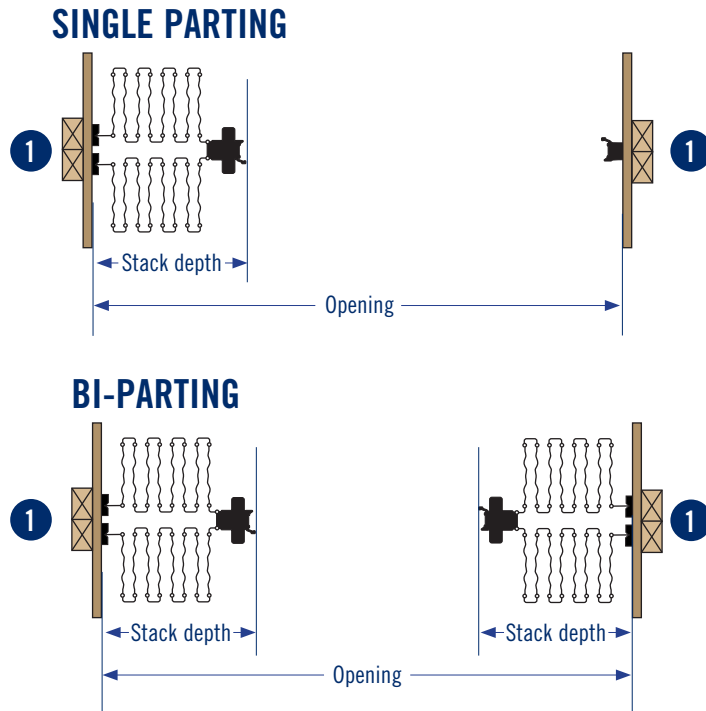
Email: info@won-door.co.nz



DuraSound with Stabilizer Bar

JAMB DETAILS - REQUIRED

(Timber stud fixing behind wall linings)



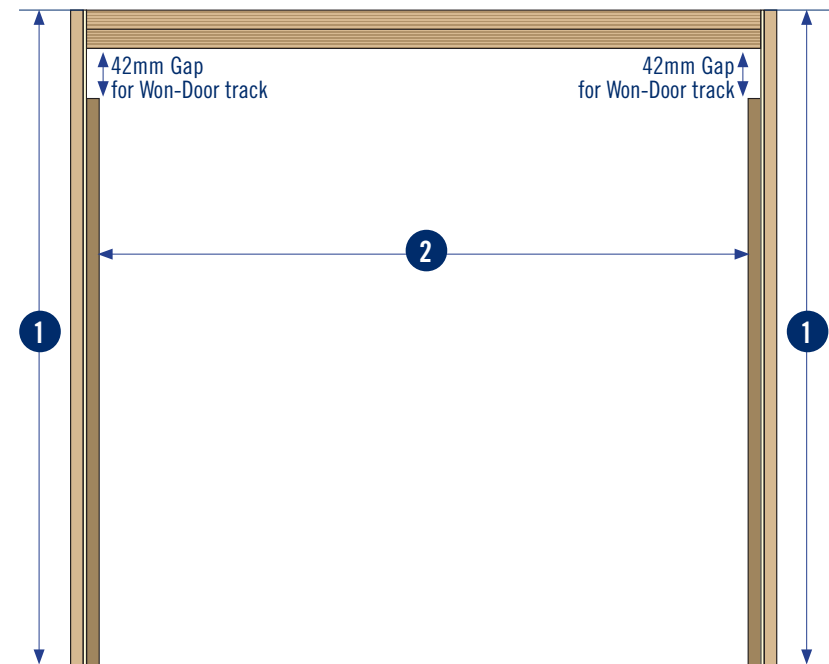
Stack Depth Ratio: 146mm per lineal metre of opening, **PLUS** 152mm for the lead post.
NOTE: For Bi-Parting doors use half the opening width.

Stack Depth Area Calculation:

Single Parting = (Opening width (m) x 146) + 152
Bi-Parting = (1/2 Opening width (m) x 146) + 152

JAMB DETAILS - OPTIONAL

(Hardwood timber jamb on face of wall linings)



1. **REQUIRED:** Twin timber studs behind wall lining centred on header to take aluminium jamb.

2. **OPTIONAL:** 150x20mm Hardwood timber jamb "by others" on face of wall linings. Leave a 42mm gap from the underside of plywood header, to top of hardwood jamb.

For further details contact:

Won-Door Australia Pty Ltd.

Tel: 1800 682 965

Email: info@won-door.com.au

Won-Door New Zealand Ltd.

Tel: 0800 688 555

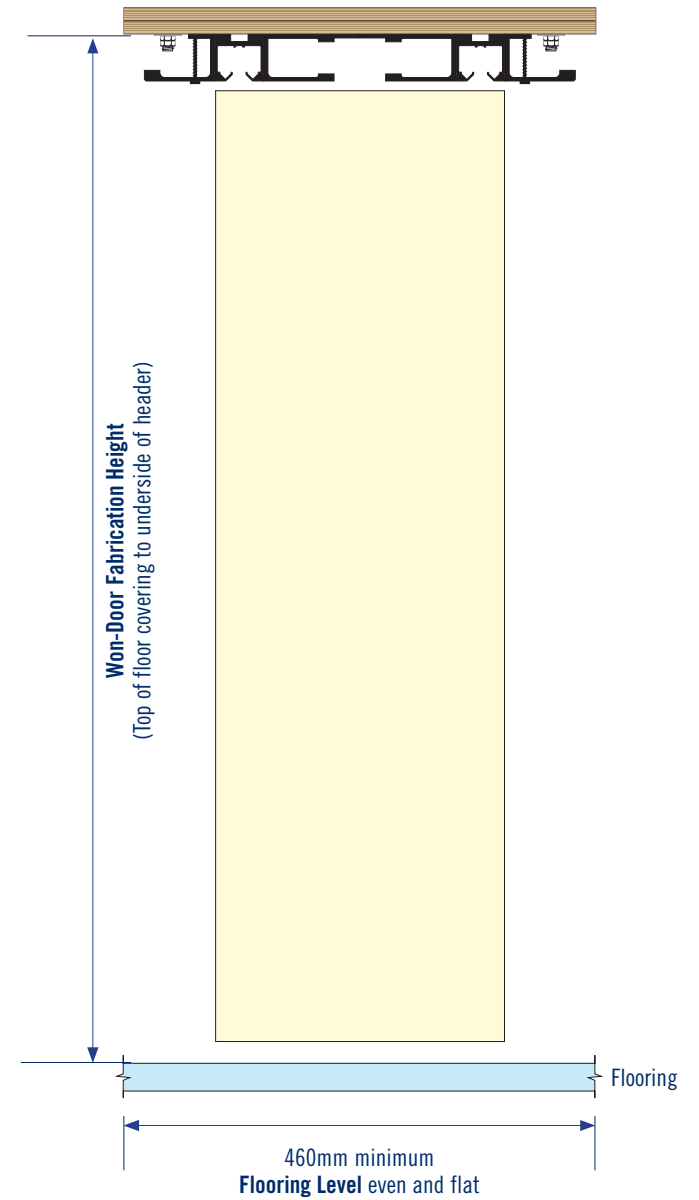
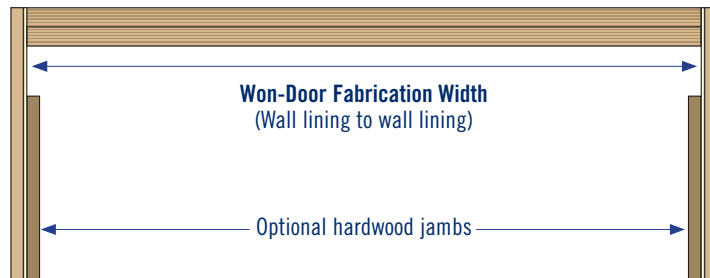
Email: info@won-door.co.nz



WON-DOOR
FOLDING PARTITIONS
FIRE & ACOUSTIC SOLUTIONS

DuraSound

FABRICATION DIMENSIONS AND LEVEL FLOORING



For further details contact:

Won-Door Australia Pty Ltd.

Tel: 1800 682 965

Email: info@won-door.com.au

Won-Door New Zealand Ltd.

Tel: 0800 688 555

Email: info@won-door.co.nz