

CLUTCH/ENCODER WIRE (WON-DOOR USE ONLY)  
MOTOR WIRE (WON-DOOR USE ONLY)  
BRAKE WIRE (WON-DOOR USE ONLY)  
DOOR WIRE (WON-DOOR USE ONLY)

#### INTERNAL ALARM RELAY MODULE

NOTE: RELAY CONTACT RATED 1A  
RESISTIVE @ 24VDC NON-SUPERVISED,  
FORM "C", DRY CONTACT. CONNECT TO  
POWER LIMITED SOURCES ONLY.

#### AUXILIARY RELAY FUNCTIONS

SUPERVISORY-CONTROLLER OFFLINE FOR SERVICE  
TROUBLE-CONTROLLER FAULT DETECTED  
DOOR-DOOR CLOSED/NOT CLOSED  
ALARM OUT-CONTROLLER IN "ALARM" CONDITION  
SEE OWNER MANUAL FOR MORE DETAILS.

#### ALARM INPUT

SMOKE DETECTOR OR FIRE ALARM, NORMALLY OPEN  
(NORMALLY CLOSED AS OPTION), DRY CONTACT  
REQUIRED FROM INITIATING SOURCE, SUPERVISED BY  
WON-DOOR WITH END-OF-LINE 4.7KΩ RESISTOR

ALARM INPUT WIRING AND CONDUIT BY ELECTRICAL  
CONTRACTOR..  
2 CONDUCTOR LOW VOLTAGE STRANDED HOOKUP FROM  
ALARM SYSTEM TO CONTROLLER. 18 GA TO 14 GA  
ACCEPTABLE. POWER LIMITED NOT SUPERVISED. WIRING  
AND CONDUIT PER NEC.

ALL FACE PLATES, CONDUIT, AND WIRES TO  
CONTROL BOX BY ELECTRICAL  
CONTRACTOR

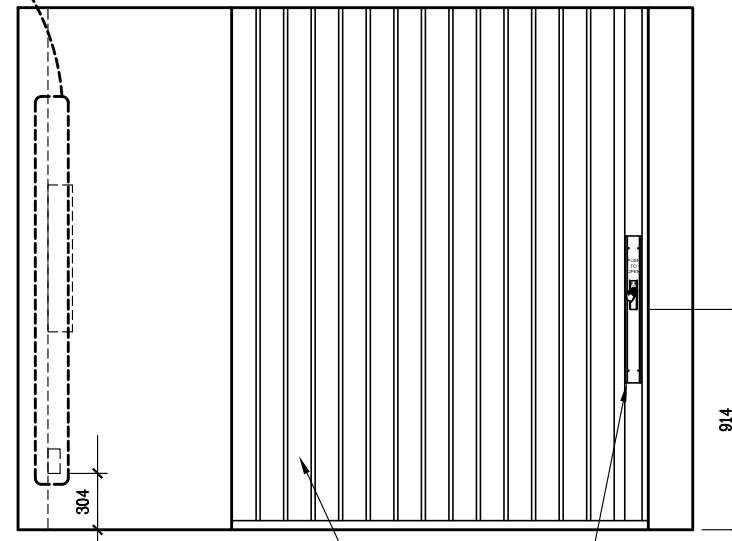
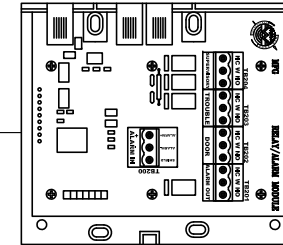
A.C. WIRING INTO "J" BOX. AND CONDUIT BY  
ELECTRICAL CONTRACTOR.  
COLOR CODED 2 CONDUCTORS WITH GROUND.  
100-240 VAC, 60/50 Hz, 10 AMP.  
BLACK = HOT  
WHITE = COMMON  
GREEN = GROUND

FIRE ALARM INITIATING DEVICE BY  
ELECTRICAL CONTRACTOR

4.7 KΩ EOL RESISTOR BY WON-DOOR.

LOW VOLTAGE  
CIRCUITS

INTERNAL ALARM RELAY  
(ARM)



FOLDING FIRE PARTITION.

OPTIONAL EXIT HARDWARE TYPICAL ON BOTH SIDES  
OF THE DOOR.

#### ADDITIONAL FEATURES AVAILABLE UPON REQUEST:

1. KEY SWITCH (ADD ADDITIONAL CONDUIT IN BACK OF POCKET FROM "DC" "J" BOX TO "J" BOX LOCATED WITHIN LINE-OF-SIGHT OF THE PARTITION WITH 3 CONDUCTOR LOW VOLTAGE STRANDED WIRE 18Ga MIN. 14Ga MAX. TO DOOR CONTROL BOX BY ELECTRICAL CONTRACTOR)
2. SINGLE DOOR DISPLAY (ADD ADDITIONAL "J" BOX CENTERED IN BACK OF POCKET 1676 MAX. AFF WITH 51 X 102 MUD RING AND CONDUIT TO "J" BOX LOCATED IN WALL NEAR DOOR LOCATION WITH CAT 3 CABLE OR BETTER BY ELECTRICAL CONTRACTOR)
3. OPTICAL OBSTRUCTION DETECTOR (ADD ADDITIONAL CONDUIT IN BACK OF POCKET FROM "DC" "J" BOX TO "J" BOX LOCATED AT THE FACE OF POCKET WITH 4 CONDUCTOR 18Ga WIRE TO DOOR CONTROL BOX BY ELECTRICAL CONTRACTOR)
4. MODBUS (ADD ADDITIONAL "J" BOX CENTERED IN BACK OF POCKET 1676 MAX. AFF WITH 51 X 102 MUD RING AND USOC RJ11 6 POS. 4 CONTACT JACK, CONDUIT TO COM+/COM- INTERFACE WITH TWISTED PAIR COMMUNICATION CABLE BY ELECTRICAL CONTRACTOR)